

CREATE  
YOUR STYLE with  
CRYSTALLIZED™  
- Swarovski Elements



# WEDDING COUNTRY BROOCH

# WEDDING COUNTRY BROOCH



## CRYSTALLIZED™ – Swarovski Elements

## Supplies & Tools

Article	Product Group	Article No.	Amount	Size	Colour	Colour Code
	Beads	5301	5 pcs.	3 mm	Violet Opal	389
	Beads	5301	1 pc.	5 mm	Violet	371
	Beads	5556	1 pc.	13.5x24 mm	Crystal Silver Shade	001 SSHA
	Beads	5556	2 pcs.	11 x 19 mm	Crystal Silver Shade	001 SSHA
	Crystal Pearls	5810	5 pcs.	10 mm	Crystal Mauve Pearl	001 160
	Crystal Pearls	5810	1 pc.	11 x 8 mm	Crystal Mauve Pearl	001 160
	Pendant	6090	1 pc.		Black Diamond	215
	Pendant	6744	1 pc.	12 mm	Crystal AB	001 AB
	Findings	47508	1 pc.	8 mm	Crystal Silver Shade	001 SSHA
	Filigrees	62003	1 pc.		Amethyst/ Light Amethyst	204/212

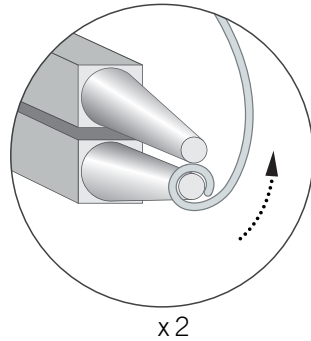
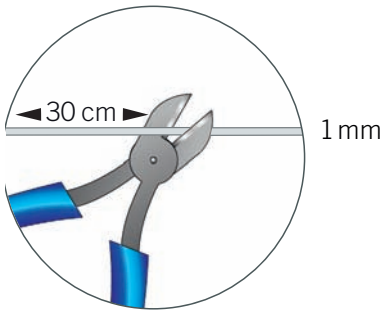
**Supplies**

- 112 cm wire 0.4 mm silver
- 30 cm wire 1 mm silver
- filigree piece flower shaped for brooch back small silver
- 23 cm thread grey
- 91 cm silver edged ribbon silver
- 1 pc. pinback 1.9 cm silver
- 2 pcs. jumprings 6 mm silver
- 2 pcs. headpins 3.8 cm silver

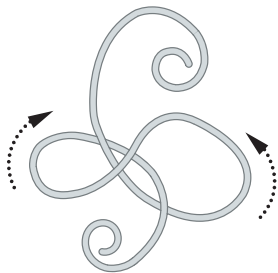
**Tools**

- round nose pliers
- flat nose pliers
- wire cutter
- glue

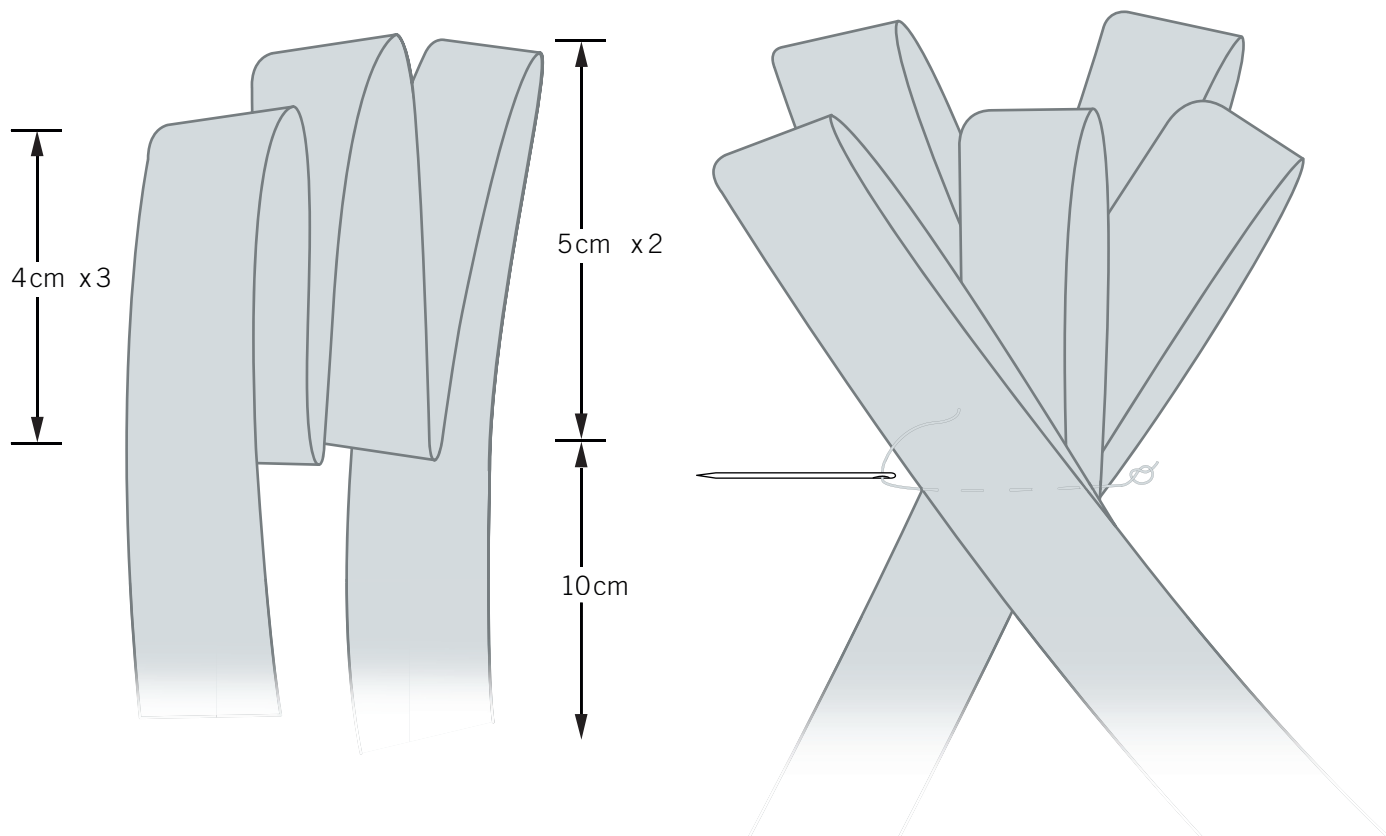
### STEP 1



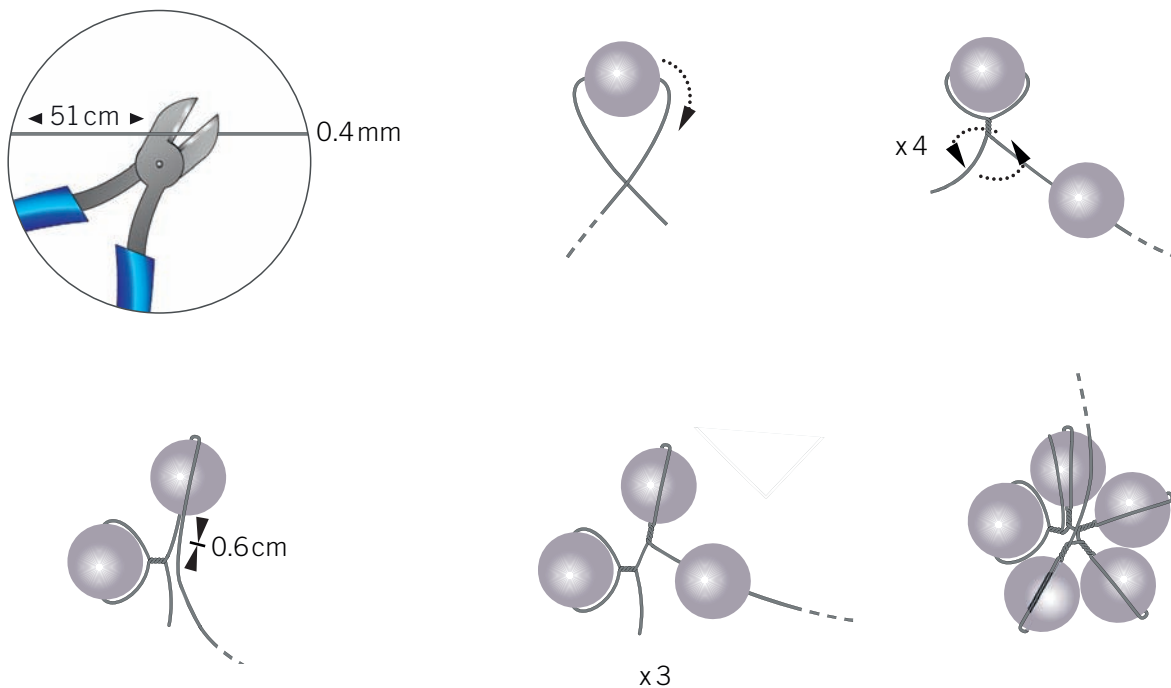
### STEP 2



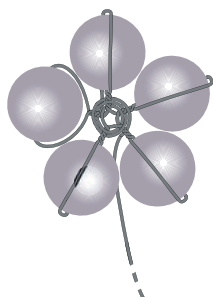
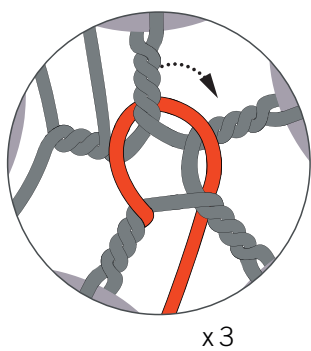
STEP 3



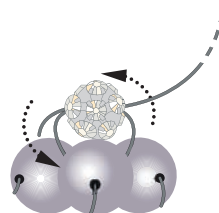
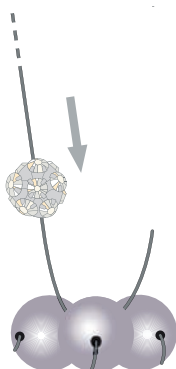
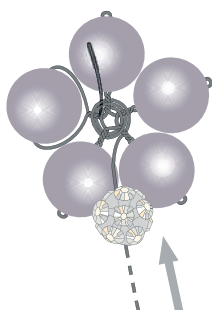
STEP 4



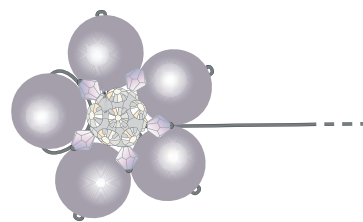
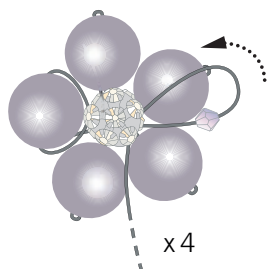
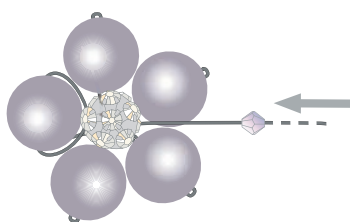
STEP 5



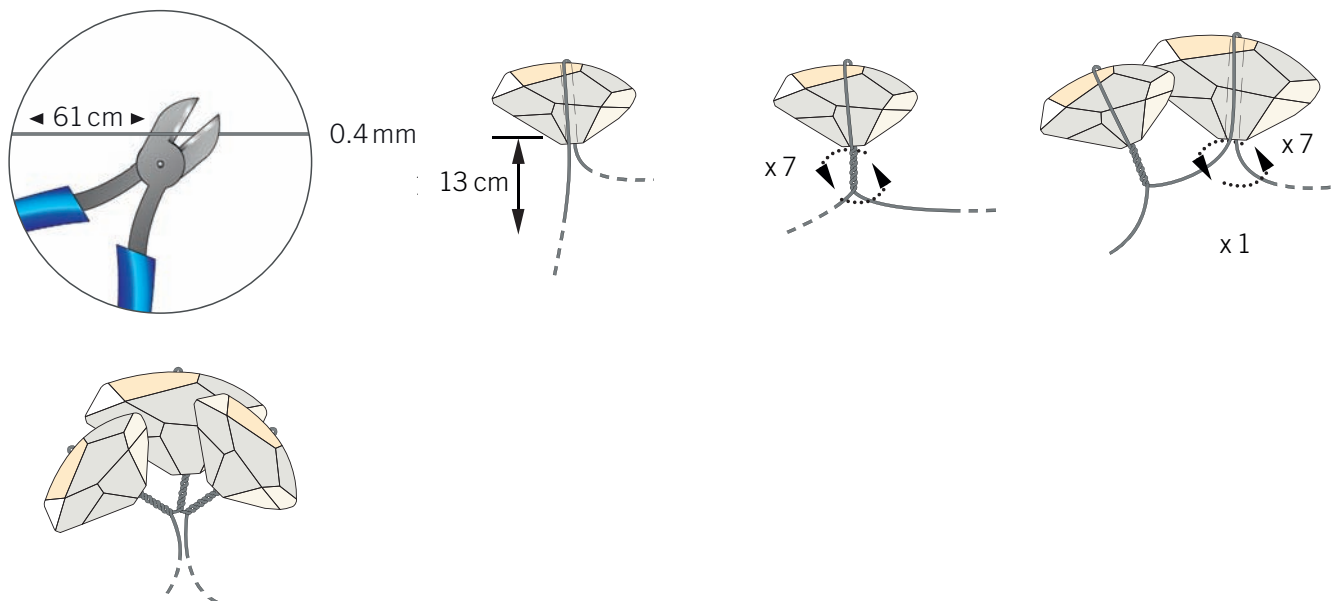
STEP 6



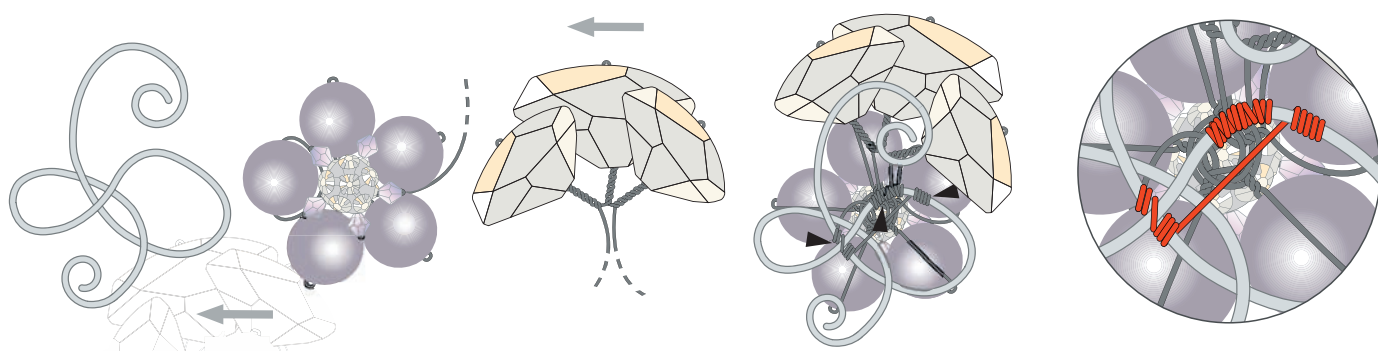
STEP 7



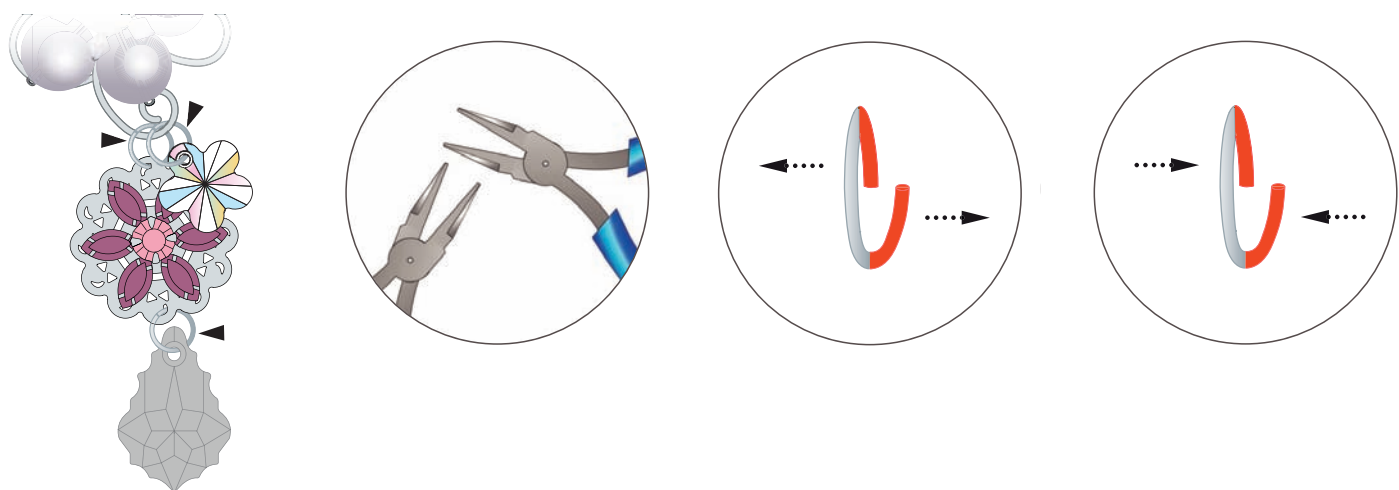
### STEP 8



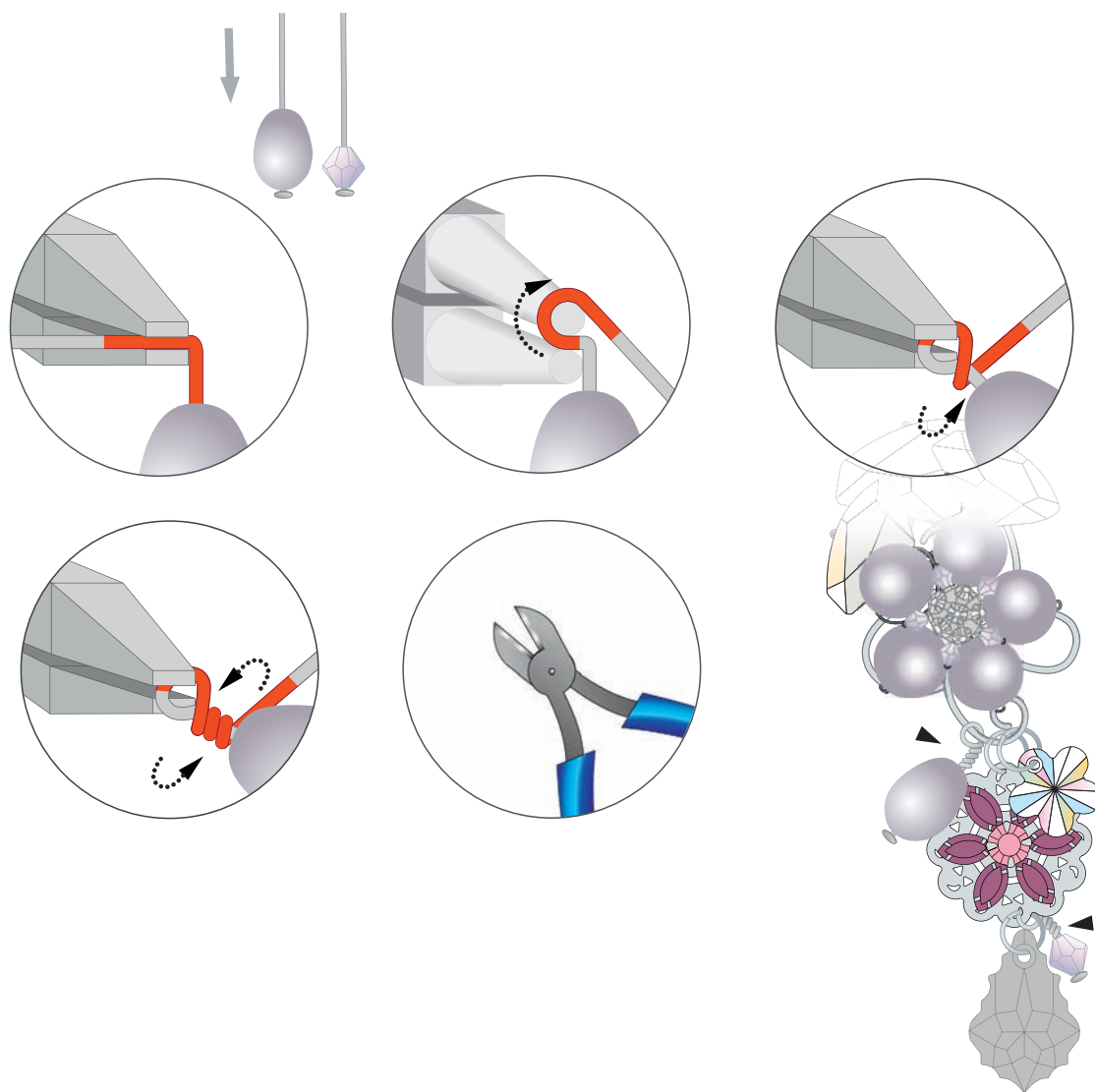
### STEP 9



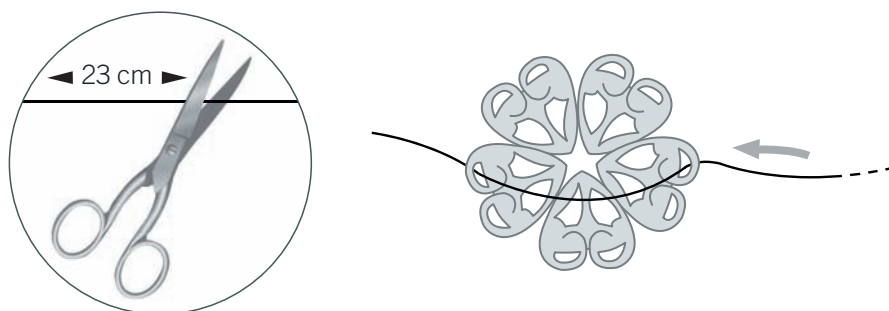
### STEP 10



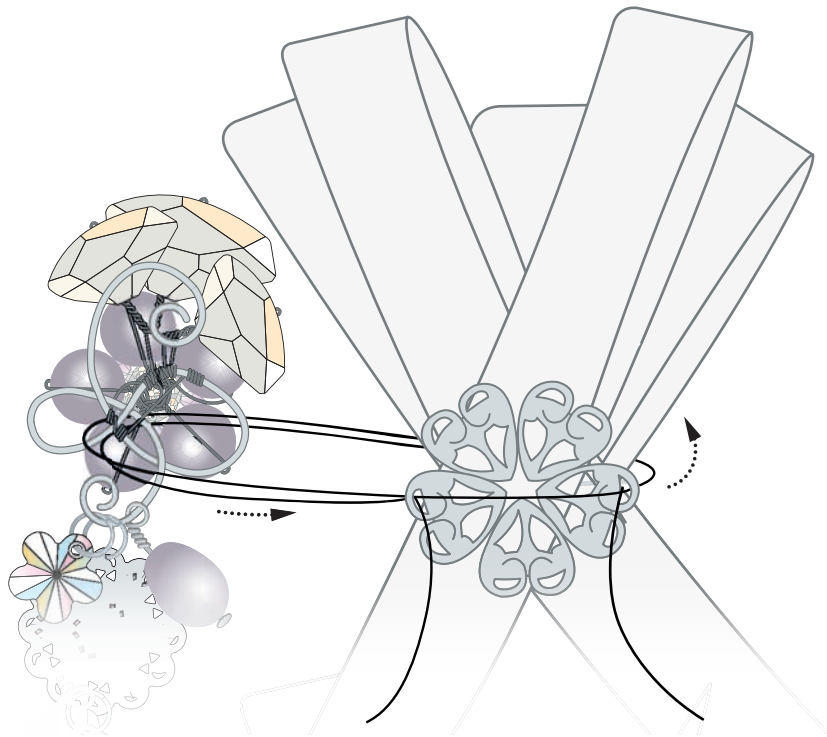
STEP 11



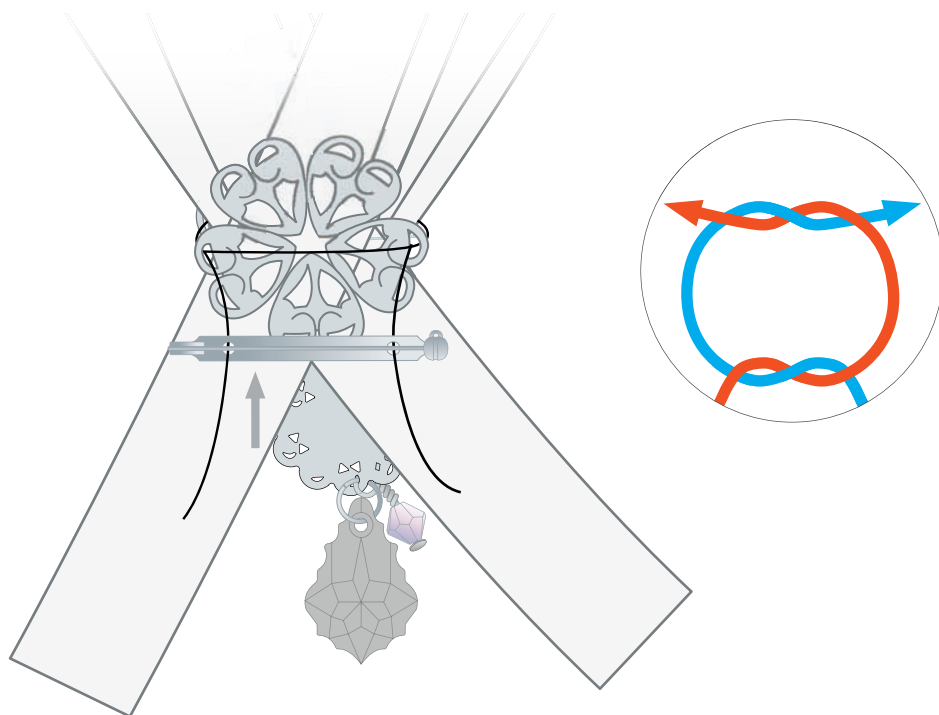
STEP 12



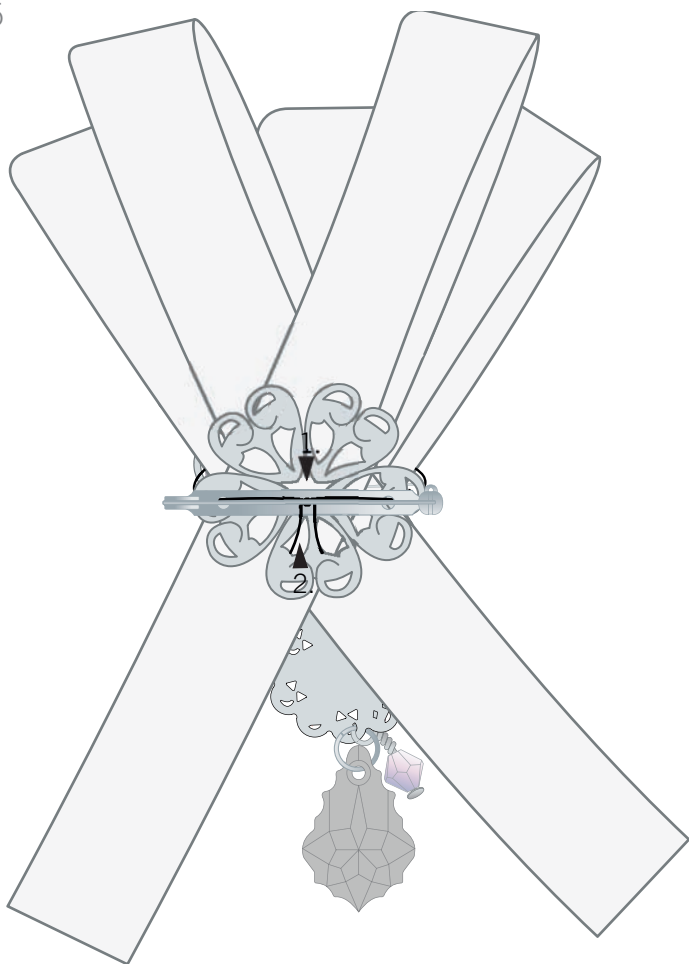
STEP 13



STEP 14



STEP 15



1.



2.

